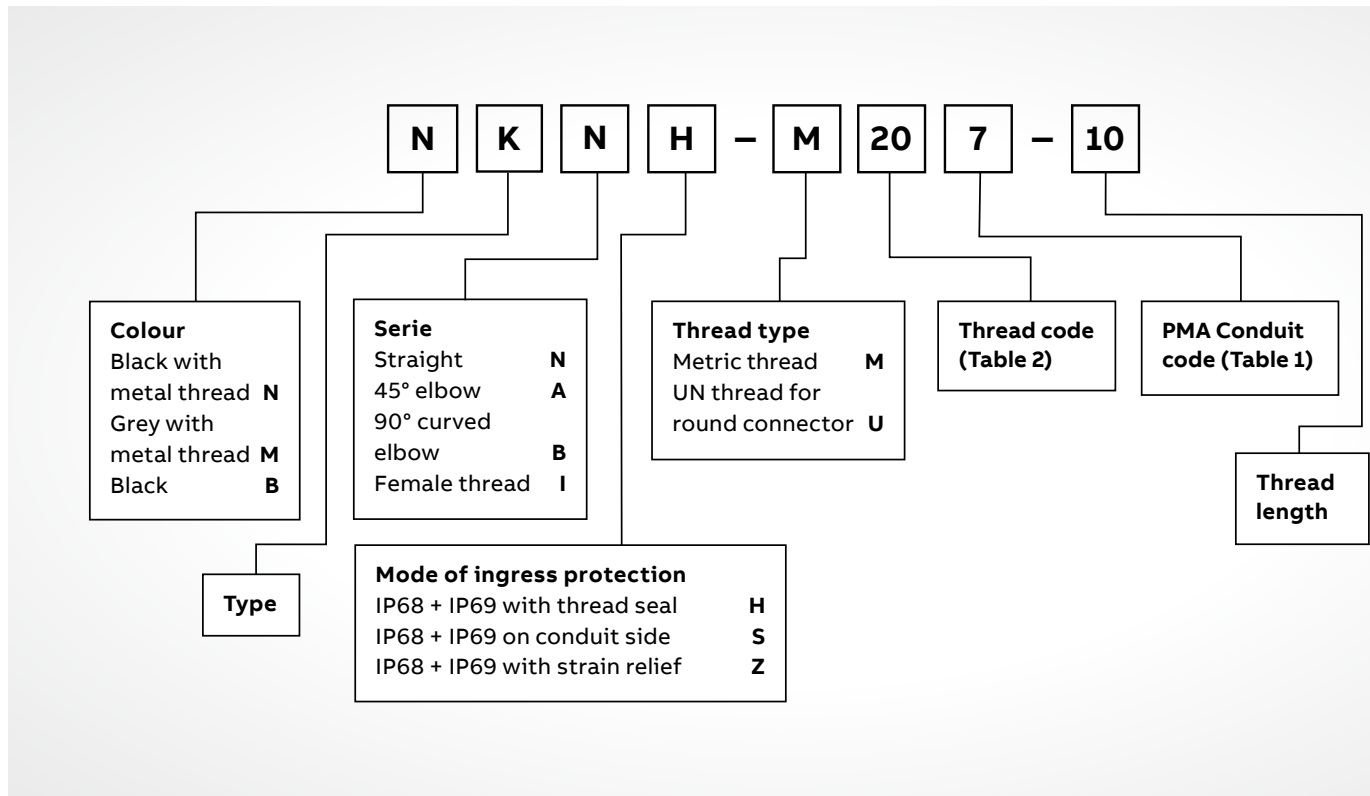
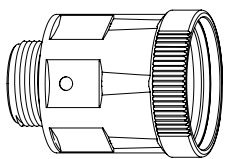


PMAFIX Pro

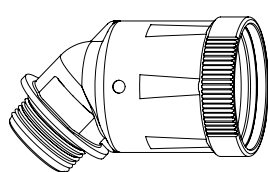
Part number codes



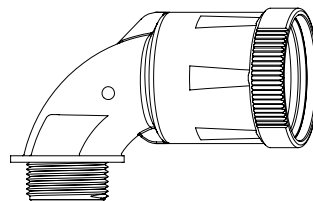
Connector series IP68 + IP69



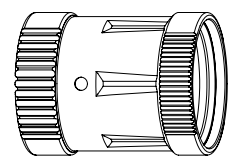
01



02



03



04

- 01 Straight (N)
- 02 45° elbow (A)
- 03 90° curved elbow (B)
- 04 Female thread (I)

PMAFIX Pro

Size codes, installation

Table 1: Conduit codes

Nominal width	Metric size	PMA code
10	12	0
12	16	2
17	20	7
23	25	3
29	32	9
36	40	6
48	50	8

Table 2: Thread codes

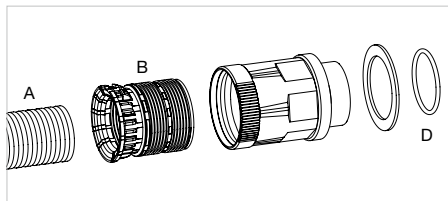
Thread Metric	PMA code
M12x1.5	M12
M16x1.5	M16
M20x1.5	M20
M25x1.5	M25
M32x1.5	M32
M40x1.5	M40
M50x1.5	M50
M63x1.5	M63

Thread UN	PMA code
7/8-20 UNEF	U21
1-20 UNEF	U24
1 3/16-18 UNEF	U29
1 7/16-18 UNEF	U35
1 3/4-18 UNS	U43
2-18 UNS	U50
2 1/4-16 UN	U56

Additional code for female thread connectors

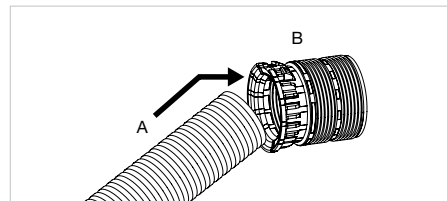
Type	PMA code
With O-ring groove (MIL C 5015)	G

Installation IP68 + IP69



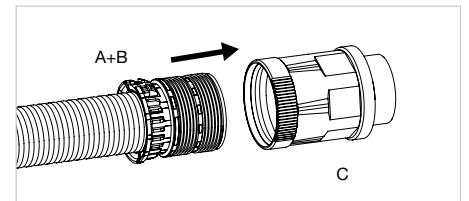
01

A = Corrugated conduit
 B = Sealing and locking element
 C = Fitting body
 D = Thread seal (O-ring or glat gasket*)



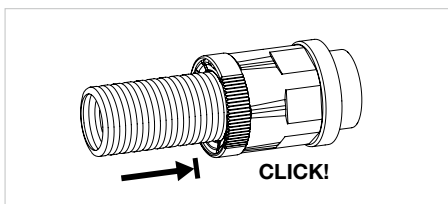
02

Place corrugated conduit (A) at a slight angle against the sealing element (B), then push right into the end.



03

Push the conduit and sealing element (A+B) together into the outer body of the fitting (C). Water or a lubricating agent can help facilitate the push-in process.



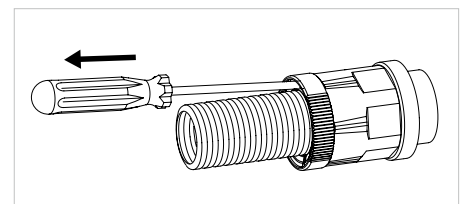
04

The locking mechanism engages when the sealing element is pushed in fully.



05

To disengage the locking mechanism introduce a size 1 screwdriver parallel to the conduit into the opening shown in the detail drawing.



06

Pull the conduit and screwdriver out of the fitting together keeping the screwdriver parallel to the conduit.